

DKIT - SSi

Electric Encoder™ demonstration kit



The demo kit (DKIT - SSi) provides demonstration & integration environment for the Electric Encoder™ and includes all the necessary hardware and software.

The Demo Kit is available with the majority of the DS rotary Electric Encoder™ product line (DS-25, DS-37, DS-58, DS-90 and DS-130) , SSi interface is available with internal or external SC2SSi module.

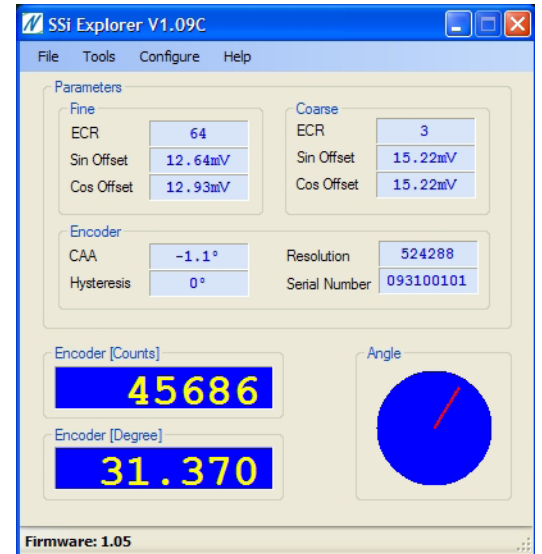
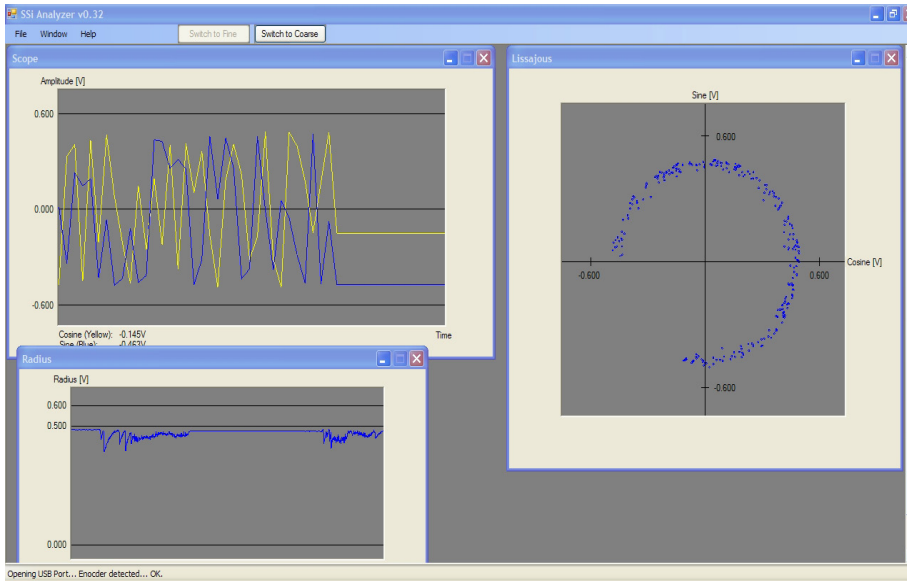
The demo kit include:

- (i) *Electric Encoder mounted on a rotating jig.*
- (ii) *The external or internal SC2SSi module provides conversion of the original analog Sine / Cosine signals to SSi over RS-422*
- (iii) *Cables & Connectors.*
- (iv) *SW – SSi Explorer, SSi Analyzer and more (available on the web site).*
- (v) *RS-422 to USB convertor*
- (vi) *Suite case*

Supply voltage	5V ± 5% (via USB)
Environment	
Operating temperature	0°C to +40°C
Relative humidity	<98 %
Protection	IP 40
Output	
Digital	Absolute position - SSi
Performance	Defined by the selected encoder
Communication	SSi and NCP over RS-422



DS-90 example

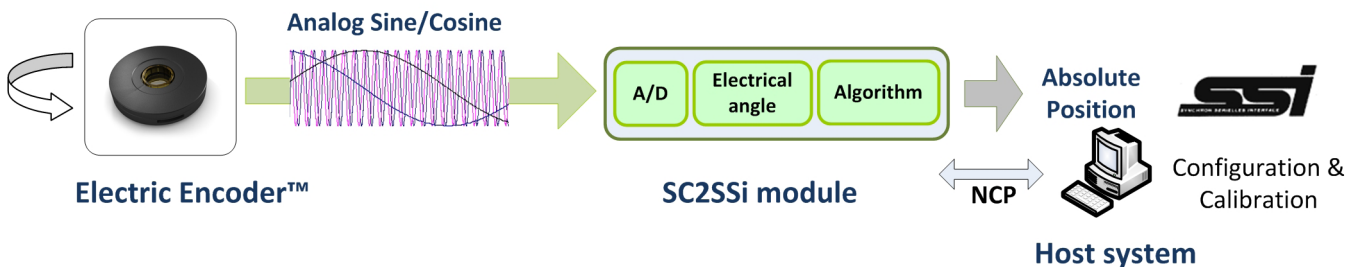


NCP - Netzer Communication Protocol:

The NCP is a bidirectional serial protocol interface designed for easy access to the absolute position and for setup parameters via RS-422.

Software tools

Provides a set of tools for testing, integration, mounting aid and calibration of the Electric Encoder™



Demo Kits catalog numbers – SSI output

- DKIT-DS-25-16-DF
- DKIT-DS-37-16-DF
- DKIT-DS-58-32-DG-02
- DKIT-DS-90-64-SH
- DKIT-DS-130-64-DH